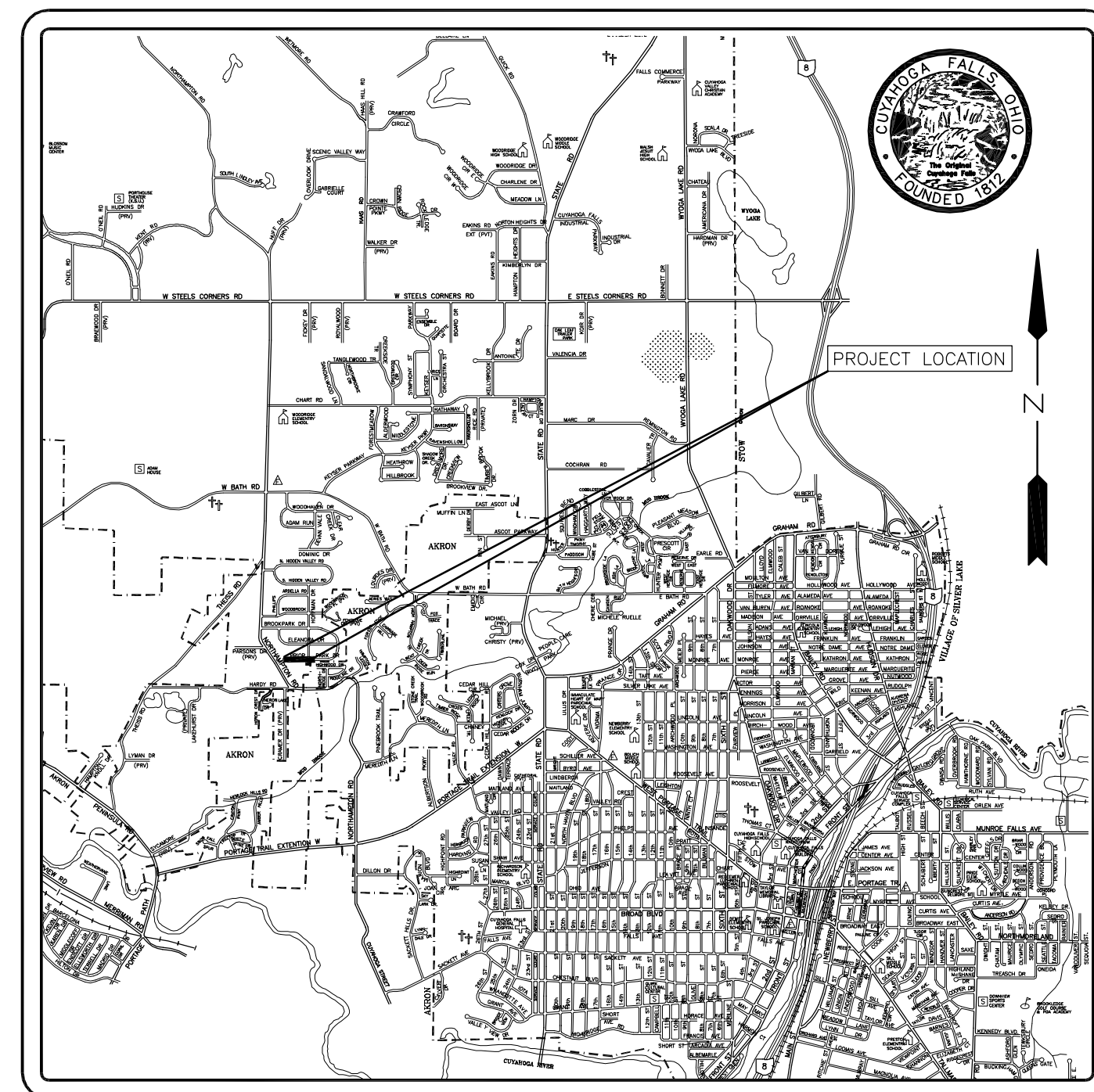


DEPARTMENT OF PUBLIC SERVICE DIVISION OF ENGINEERING

2021 CONC. PROGRAM – PRIOR PARK DRIVE RECONSTRUCTION CUYAHOGA FALLS SUMMIT COUNTY, OHIO

INDEX OF SHEETS:

TITLE SHEET.....	1
SITE PLAN.....	2,3
DETAILS AND GENERAL NOTES.....	4



SYMBOL	DESCRIPTION
○	POWER POLE
○	TREE
○	EX. HYDRANT
○	VALVE
---	EX. DRIVEWAY
---	EX. WATER
---	EX. STORM SEWER
---	EX. SANITARY SEWER
---	EX. RIGHT-OF-WAY
○	EX. MANHOLE
○	EX. CATCH BASIN
---	EX. DOWNSPOUT DRAIN OPENING

LOCATION MAP

LEGEND

○	POWER POLE
○	TREE
○	EX. HYDRANT
○	VALVE
---	EX. DRIVEWAY
---	EX. WATER
---	EX. STORM SEWER
---	EX. SANITARY SEWER
---	EX. RIGHT-OF-WAY
○	EX. MANHOLE
○	EX. CATCH BASIN
---	EX. DOWNSPOUT DRAIN OPENING

PLANS PREPARED AND RECOMMENDED BY:
CITY OF CUYAHOGA FALLS
DIVISION OF ENGINEERING
2310 SECOND ST. CUYAHOGA FALLS, OHIO



APPROVALS:

Don Walters

APPROVED: _____

MAYOR: DON WALTERS

DATE: 4/23/2021

APPROVED: _____

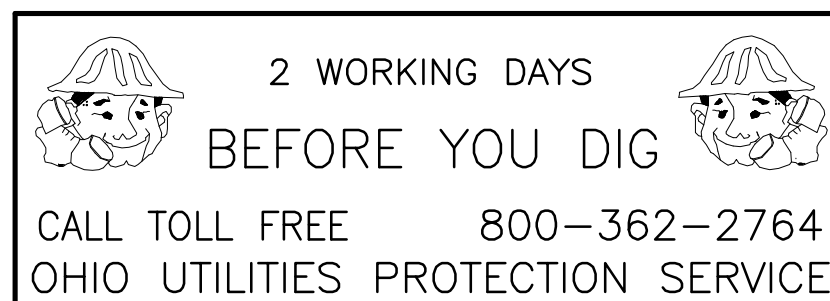
SERVICE DIRECTOR: ANTHONY ZUMBO

DATE: 4/23/2021

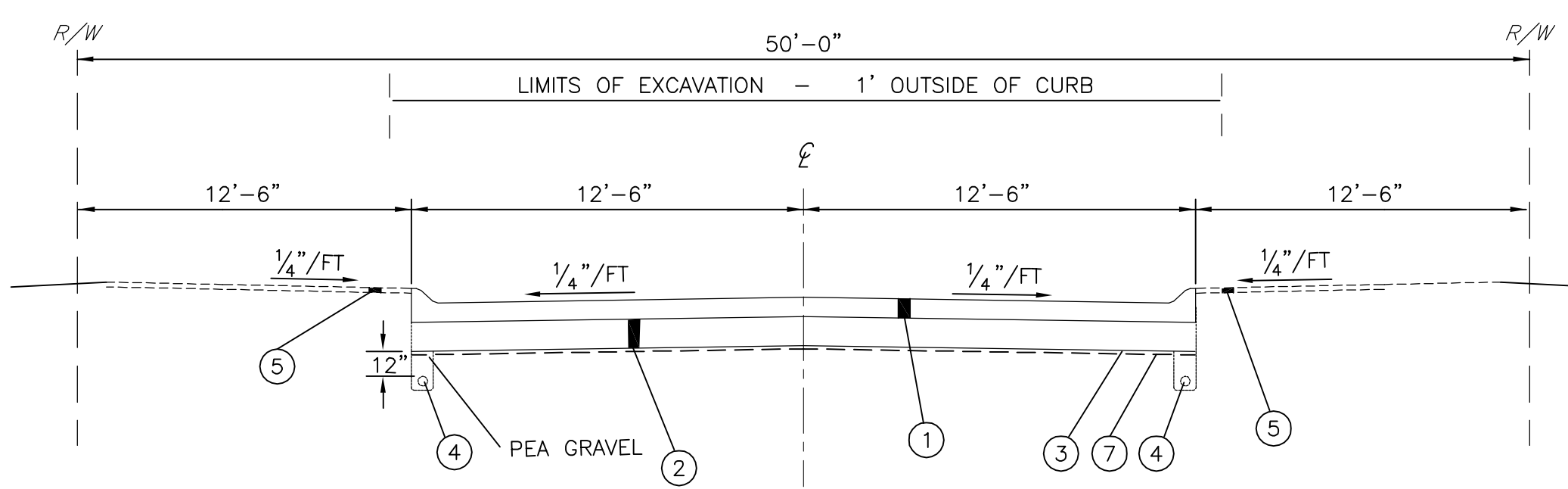
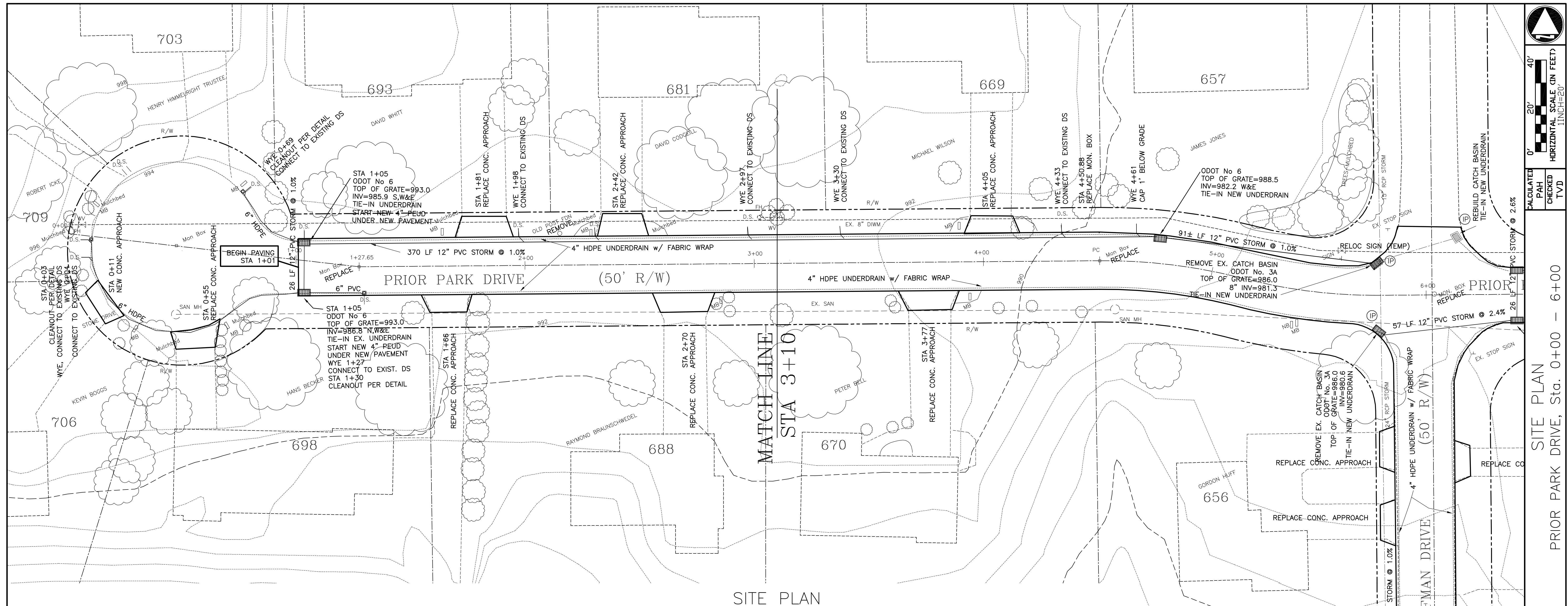
APPROVED: _____

CITY ENGINEER: TONY V. DEMASI

DATE: 4/23/2021



PROJECT: _____
DATE OF LETTING _____ 20____, CONTRACT No. _____



- LEGEND**
- 1 ITEM 452 - 8" PLAIN PORTLAND CEMENT CONCRETE PAVEMENT WITH INTEGRAL (ROLLED) CURB
 - 2 ITEM 304 - 12" AGGREGATE BASE
 - 3 ITEM 203 - SUBGRADE COMPACTION
 - 4 ITEM 605 - 4" PERFORATED UNDERDRAIN w/ FABRIC WRAP
 - 5 ITEM 659 - SEEDING AND MULCHING
 - 7 ITEM 861 - TENSAR TRIAX TX-160 GEOGRID

2 WORKING DAYS
BEFORE YOU DIG
CALL TOLL FREE 800-362-2764
OHIO UTILITIES PROTECTION SERVICE

CITY OF CUYAHOGA FALLS
DIVISION OF ENGINEERING

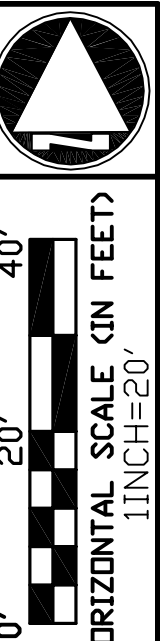
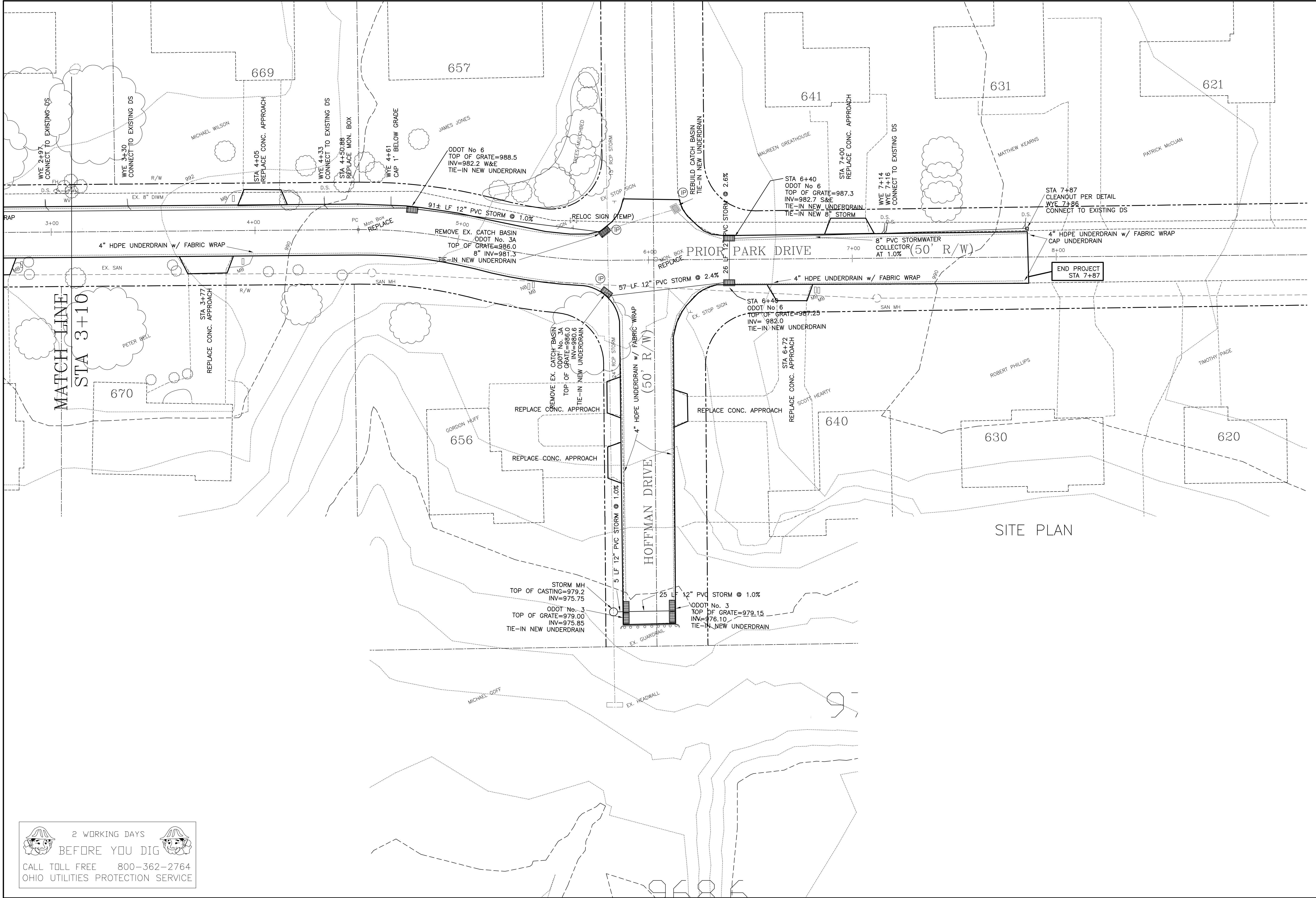
SITE PLAN
PRIOR PARK DRIVE, Sta. 0+00 - 6+00

CALCULATED PAH CHECKED TVD

HORIZONTAL SCALE (IN FEET) 1"=40'

VERTICAL SCALE (IN FEET) 1"=20'

2/4



CALCULATED
PAH
CHECKED
TVD

SITE PLAN
PRIOR PARK DRIVE, Sta. 3+00 - 7+87

SITE PLAN

CITY OF CUYAHOGA FALLS
DIVISION OF ENGINEERING

2 WORKING DAYS
BEFORE YOU DIG
CALL TOLL FREE 800-362-2764
OHIO UTILITIES PROTECTION SERVICE

STORM SEWERS

- ALL STORM SEWER PIPE, CASTINGS, INLET BASINS, MANHOLES AND ANY OTHER MATERIALS TO BE USED ON THE PROJECT MUST BE INSPECTED BY THE CITY OF CUYAHOGA FALLS ENGINEERS OFFICE AT LEAST 48 HOURS BEFORE INSTALLATION.
- ALL PIPE BEDDING AND BACKFILLING SHALL BE AS SPECIFIED IN THE ODOT CMS ITEM 611. TRENCHES UNDER DRIVES, PAVEMENT AND WALKS OR WITHIN THE RIGHT-OF-WAY SHALL BE BACKFILLED TO SUBGRADE. COST TO BE INCLUDED IN COST OF STORM SEWER. PREMIUM GRANULAR BEDDING AND BACKFILL, SUCH AS #57 OR #67 LIMESTONE, SHALL ALSO BE USED WHENEVER TWO UTILITIES CROSS.
- STORM SEWER SHALL BE OF TYPE AND SIZE AS SHOWN ON THE PLANS AND INSTALLED IN ACCORDANCE WITH MANUFACTURER'S RECOMMENDATIONS.
- STORM SEWER CONDUIT SHALL BE FURNISHED AND INSTALLED IN ACCORDANCE WITH THE ODOT CMS, ITEM 611. A 6" CUSHION OF SAND SHALL BE PLACED UNDER ALL STORM UTILITY LINES CONSTRUCTED ON ROCK. PRICES BID PER FOOT FOR ALL ALL PIPES ARE COMPLETE IN PLACE REGARDLESS OF SOIL OR ROCK CONDITIONS.
- MAINTAIN A FOUR (4) FOOT MINIMUM HORIZONTAL CLEARANCE FROM EDGE OF WATER LINE TO EDGE OF STORM SEWER. MAINTAIN A 12" MINIMUM VERTICAL CLEARANCE FROM EDGE OF WATER LINE TO EDGE OF STORM SEWERS AND INLET CONNECTIONS WHERE UTILITIES CROSS.
- LOCATION OF PROPOSED MANHOLES AND CATCH BASINS MAY BE REVISED DUE TO UTILITY CONFLICTS AS DIRECTED BY THE CITY OF CUYAHOGA FALLS ENGINEER AT NO COST TO THE CITY OF CUYAHOGA FALLS.
- CONTRACTOR SHALL MAINTAIN FLOW THROUGH EXISTING STORM SEWERS AND DITCHES AT ALL TIMES.
- WHERE EXISTING WATER SERVICES INTERFERE WITH THE STORM SEWER THEY SHALL BE ADJUSTED BY BEING CARRIED OVER THE STORM SEWER. THE COST OF ADJUSTING SHALL BE INCLUDED IN THE BID PRICE FOR STORM SEWER EXCEPT WHERE ADDITIONAL COPPER IS NEEDED. IT SHALL BE PAID FOR AS LIN. FT. OF 3/4" TYPE "K" SERVICE.

CLEAN DITCH AND CATCH BASIN

THE CONTRACTOR SHALL PERFORM THIS ITEM OF WORK ONLY IN THE LOCATIONS DIRECTED BY THE ENGINEER. IT SHALL INCLUDE REMOVAL OF ALL DEBRIS BLOCKING FLOW TO CATCH BASIN AND RESHAPING OF DITCH TO CHANNEL STORM WATER INTO CATCH BASIN.

WORK LIMITS

THE WORK LIMITS SHOWN ON THESE PLANS ARE FOR PHYSICAL CONSTRUCTION ONLY. THE INSTALLATION AND OPERATION OF ALL TEMPORARY TRAFFIC CONTROL AND TEMPORARY TRAFFIC CONTROL DEVICES REQUIRED BY THESE PLANS SHALL BE PROVIDED BY THE CONTRACTOR WHETHER INSIDE OR OUTSIDE THESE WORK LIMITS.

EROSION CONTROL

ITEM 659 - SEEDING AND MULCHING

SEEDING AND MULCHING SHALL BE APPLIED TO ALL AREAS OF EXPOSED SOIL BETWEEN THE RIGHT-OF-WAY LINES, AND WITHIN THE CONSTRUCTION LIMITS FOR AREAS OUTSIDE THE RIGHT-OF-WAY LINES COVERED BY WORK AGREEMENT OR SLOPE EASEMENT. QUANTITY CALCULATIONS FOR ITEM 659 - SEEDING AND MULCHING, ARE BASED ON THESE LIMITS.

MANHOLES, CATCH BASINS AND INLETS REMOVED OR ABANDONED

ALL CASTINGS SHALL BE CAREFULLY REMOVED AND STORED WITHIN THE RIGHT-OF-WAY FOR SALVAGE BY CITY FORCES. PAYMENT FOR ALL OF THE ABOVE SHALL BE INCLUDED IN THE CONTRACT PRICE FOR THE PERTINENT 611 ITEM.

EROSION AND SEDIMENT CONTROL

SPECIFICATIONS SET FORTH IN THE 2019 VERSION OF ODOT'S CONSTRUCTION AND MATERIALS SPECIFICATIONS, AND THE MOST CURRENT VERSION OF THE LOCATION AND DESIGN MANUAL AND STANDARD DRAWINGS SHALL BE USED TO ENSURE ADEQUATE EROSION AND SEDIMENT CONTROL DURING CONSTRUCTION, INCLUDING USE OF BEST MANAGEMENT PRACTICES FOR EROSION AND SEDIMENT CONTROL.

GENERAL CONSTRUCTION NOTES

- THE CITY OF CUYAHOGA FALLS CERTIFIES THAT ALL UTILITIES IN EXISTING ROADS ARE SHOWN ONLY AS THEY APPEAR ON EXISTING RECORDS OR CAN BE OBSERVED ABOVE GROUND. ANY UNKNOWN UNDERGROUND UTILITIES THAT ARE NOT SHOWN ON THESE PLANS, DUE TO THEIR CONCEALED NATURE, CANNOT BE CERTIFIED.
- THE CONSTRUCTION OF THIS PROJECT SHALL BE GOVERNED BY THE CITY OF CUYAHOGA FALLS SPECIFICATIONS, 1976 EDITION, WHERE APPLICABLE, AND BY THE STATE OF OHIO DEPARTMENT OF TRANSPORTATION CONSTRUCTION AND MATERIAL SPECIFICATIONS (2019 EDITION).
- NOTIFY THE CITY OF CUYAHOGA FALLS ENGINEER (330-971-8180) A MINIMUM OF FORTY-EIGHT (48) HOURS PRIOR TO THE START OF CONSTRUCTION. A PRE-CONSTRUCTION MEETING SHALL BE SCHEDULED BY THE CONTRACTOR TO BE HELD A MINIMUM OF FIVE (5) WORKING DAYS PRIOR TO THE START OF CONSTRUCTION.
- ALL AREAS DISTURBED BY THE CONSTRUCTION OF ANY PART OF THESE IMPROVEMENTS SHALL BE RESTORED TO AT LEAST THE "BEFORE CONSTRUCTION" CONDITION AS DIRECTED BY THE CITY OF CUYAHOGA FALLS AND/OR ITS ENGINEER. THE COST OF THE ABOVE SHALL BE BORNE ENTIRELY BY THE CONTRACTOR.
- ALL DISTURBED AND/OR DAMAGED UNDERGROUND UTILITIES, PAVEMENTS, BERMS AND DITCHES SHALL BE REPAIRED AND OR REPLACED AS DIRECTED BY THE CITY OF CUYAHOGA FALLS ENGINEER.
- IF MUD, SOIL, OR OTHER DEBRIS IS DEPOSITED ON ADJACENT STREETS, ROADS, OR OTHER PROPERTY, THE CONTRACTOR SHALL BE RESPONSIBLE FOR REMOVAL OF SUCH AS DIRECTED BY THE CITY OF CUYAHOGA FALLS.
- FERTILIZING, SEEDING AND MULCHING FOR RESTORATION OF DISTURBED AREAS SHALL CONFORM TO ITEM 659 AS SPECIFIED IN THE O.D.O.T. CONSTRUCTION AND MATERIAL SPECIFICATIONS.
- ALL EXISTING APPURTENANCES (UTILITY POLES, VALVES, HYDRANTS, MANHOLES, ETC.) ARE TO BE HELD BY THE CONTRACTOR, UNLESS OTHERWISE SHOWN ON THE PLANS.
- ANY DEFECTS IN THE CONSTRUCTION, INCLUDING MATERIALS OR WORKMANSHIP, SHALL BE REPLACED OR CORRECTED BY REMOVAL AND REPLACEMENT OR OTHER APPROVED METHOD PRIOR TO ACCEPTANCE BY THE CITY OF CUYAHOGA FALLS ENGINEER.
- TRAFFIC SHALL BE MAINTAINED AT ALL TIMES AND EVERY ATTEMPT MUST BE MADE TO BACK FILL ANY TRENCHES IN ORDER TO KEEP WALKS AND ROADWAYS PASSABLE. THE CONTRACTOR SHALL BE RESPONSIBLE FOR ANY LIGHTS, BARRICADES, OR OFF-DUTY POLICE PERSONNEL NEEDED TO ENSURE PROPER PUBLIC SAFETY AT THE JOB SITE AT ALL TIMES.
- ALL CONSTRUCTION METHODS AND PRACTICES MUST BE DONE IN ACCORDANCE WITH REQUIREMENTS AS SET FORTH BY O.S.H.A. REGULATIONS (LATEST EDITION).
- THE UNIT OF MEASURE FOR PIPE WILL BE THE LINEAR FOOT MEASURED FROM THE CENTERLINE TO CENTERLINE OF CATCH BASIN OR MANHOLE. PAYMENT FOR THE VARIOUS TYPES AND SIZES OF CATCH BASINS WILL BE MADE AT THE RESPECTIVE CONTRACT UNIT PRICE PER EACH, WHICH PAYMENT WILL INCLUDE WATER SEAL CASTINGS, FRAMES AND COVERS, EXCAVATION AND BACKFILL, AND ALL LABOR, MATERIALS, TOOLS, EQUIPMENT AND INCIDENTALS NEEDED TO COMPLETE WORK SPECIFIED.
- PAYMENT FOR PIPE WILL BE MADE AT THE RESPECTIVE CONTRACT UNIT PRICE PER LINEAR FOOT, WHICH PAYMENT WILL INCLUDE EXCAVATION FOR PIPE AND BACKFILL, FITTINGS AT CONNECTION TO EXISTING PIPE, AND ALL LABOR, MATERIALS, TOOLS, EQUIPMENT AND INCIDENTALS NEEDED TO COMPLETE WORK SPECIFIED.
- ALL FIELD STAKING SHALL BE COMPLETED BY A REGISTERED OHIO SURVEYOR.
- AS-BUILTS WILL NEED TO BE PROVIDED BY A REGISTERED OHIO SURVEYOR UPON COMPLETION AND FINAL ACCEPTANCE OF THE PROJECT.
- THE CITY HAS THE RIGHT TO MAKE MINOR CHANGES TO THE PLAN, INCLUDING RELOCATION OF CONDUIT OR ADDITIONAL QUANTITIES. THE CONTRACTOR WILL COORDINATE WITH THE CITY ENGINEERING DEPARTMENT. NO ADDITIONAL WORK IS TO BE PERFORMED BY THE CONTRACTOR WITHOUT INSPECTOR APPROVAL.

GENERAL NOTES

- IF THE CONTRACTOR HAS ANY QUESTIONS AS TO THE INTENT OF THESE PLANS AND SPECIFICATIONS, HE SHALL IMMEDIATELY BRING IT TO THE ATTENTION OF THE ENGINEER WHO SHALL RESPOND IN A TIMELY MANNER. ANY CHANGE IN THE PROPOSED IMPROVEMENTS MUST BE MADE BY CHANGE ORDER AND APPROVED BY THE CITY OF CUYAHOGA FALLS ENGINEER.
- ALL WORK AND MATERIAL MUST BE INSPECTED AND APPROVED BY THE CITY OF CUYAHOGA FALLS ENGINEER. THE CONTRACTOR IS RESPONSIBLE FOR CONTACTING THE ENGINEER 48 HOURS IN ADVANCE PRIOR TO STARTING WORK.
- THE CONTRACTOR IS RESPONSIBLE FOR ORDERLY JOB SITE CONDITIONS THROUGHOUT THE DURATION OF THE JOB. THE CONTRACTOR SHALL KEEP EXISTING PAVEMENTS CLEAR OF MUD, GRAVEL, GREASE AND OILS.
- THE LOCATIONS OF UNDERGROUND UTILITIES SHOWN ON THE PLANS ARE AS OBTAINED FROM THE OWNERS OF THE UTILITY, HOWEVER IT IS THE RESPONSIBILITY OF THE CONTRACTOR TO FIELD LOCATE ANY AND ALL UTILITIES PRIOR TO PERFORMING ANY WORK. CONTACT THE UTILITIES PROTECTION SERVICE (1-800-362-2764), 48 HOURS IN ADVANCE OF WORK TO BE DONE NEAR ANY EXISTING UTILITY MAIN. NON-MEMBERS MUST BE CONTACTED DIRECTLY. THE CITY CANNOT ACCEPT RESPONSIBILITY FOR INACCURACIES OR OMISSIONS OF ANY OR ALL UNDERGROUND UTILITIES. EXISTING APPURTENANCES SUCH AS UTILITY POLES AND VALVE BOXES, ETC., ARE TO BE HELD IN PLACE BY THE CONTRACTOR DURING CONSTRUCTION, UNLESS NOTED OTHERWISE ON THE PLANS.
- ANY DAMAGE CAUSED TO THE PAVEMENT, PAVEMENT MARKINGS, CONCRETE CURB AND WALK, DRIVES, DRAINAGE SYSTEMS, UNDERGROUND OR OVERHEAD UTILITIES, PIPE LINES OR LANDSCAPING, EITHER WITHIN THE RIGHT-OF-WAY OR ON ADJACENT PROPERTIES, SHALL BE FULLY RESTORED PROMPTLY BY THE CONTRACTOR WITH ALL RELATED COSTS BEING THE FULL RESPONSIBILITY OF THE CONTRACTOR.

EXAMINATION OF SITE OF WORK AND SAFETY

BECAUSE OF THE NECESSITY OF BUILDING THIS PROJECT UNDER TRAFFIC THE CONTRACTOR IS EXPECTED TO PERFORM THE WORK IN A MANNER WHICH IS SAFE FOR THE TRAVELING PUBLIC AND PEDESTRIAN OR RESIDENTS INCLUDING CHILDREN. THE CONTRACTOR MUST TAKE ADDITIONAL PRECAUTIONS AS APPROPRIATE TO PROTECT PEDESTRIANS AND TRAVELING PUBLIC FROM EXPOSURE TO HAZARDS RESULTING FROM CONSTRUCTION OPERATIONS. ALL BUSINESS SHALL HAVE ACCESS TO THEIR FACILITIES AT ALL TIMES DURING BUSINESS HOURS.

SAWCUTTING ROAD PAVEMENT

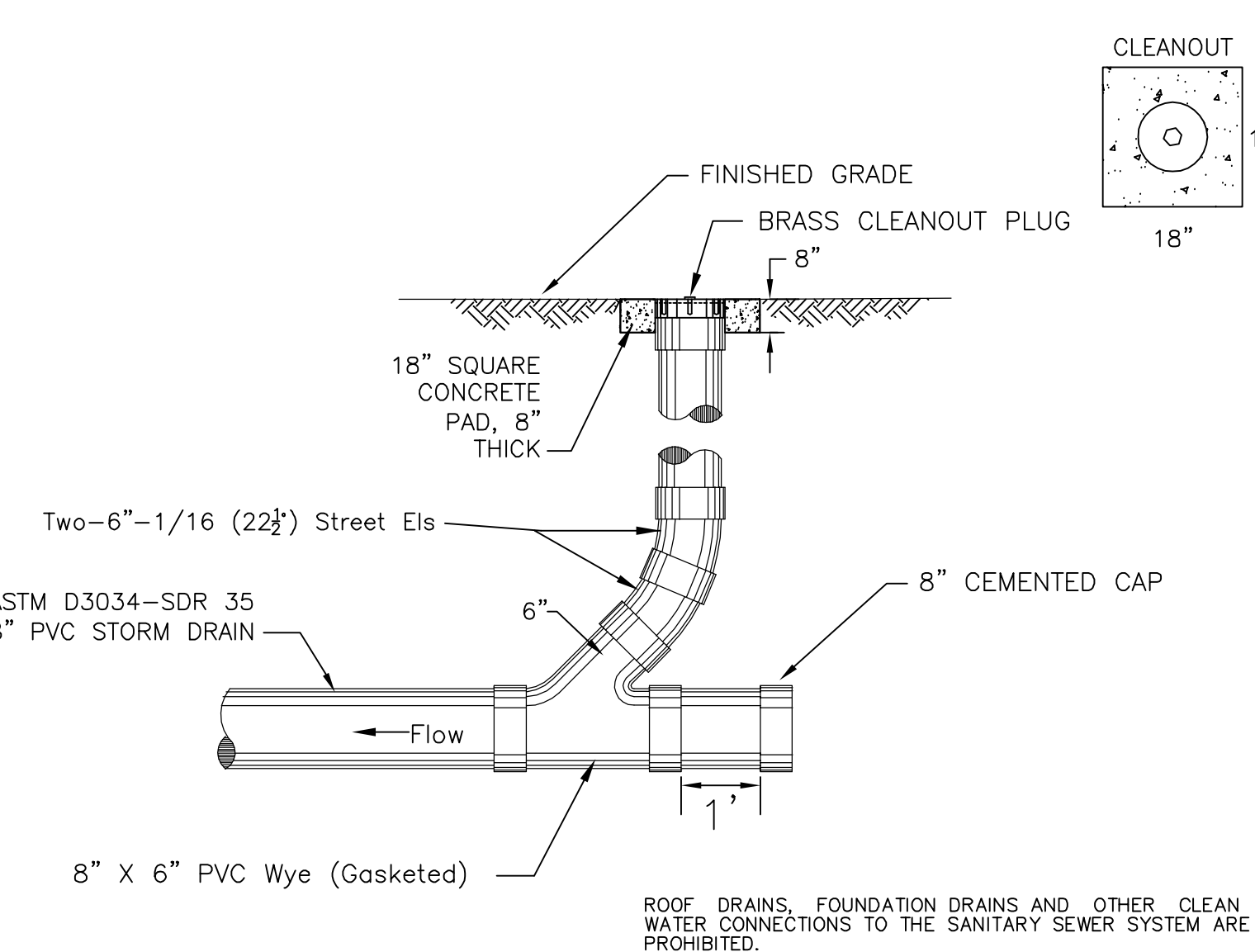
AT POINTS SHOWN IN THE PLANS, THE PAVEMENT SHALL BE SAWCUT IN NEAT, STRAIGHT LINES. THE DEPTH OF SAW CUT SHALL BE FULL DEPTH OF THE PAVEMENT.

EXCAVATION SITE PROTECTION

OPEN EXCAVATIONS SHALL BE PROTECTED WITH DRUMS/BARRICADES SPACED AT A DISTANCE NOT TO EXCEED THE DISTANCE FROM THE PAVEMENT EDGE TO THE EXCAVATION AT ALL TIMES WORK IS NOT ACTIVELY ENGAGED IN ANY CERTAIN PART OF SAME. ANY EXCAVATION LEFT OPEN OVERNIGHT MUST BE SURROUNDED BY TEMPORARY SAFETY FENCE. THIS SHALL APPLY TO ALL EXCAVATED AREAS WITHIN THE RIGHT-OF-WAY.

TRAFFIC CONTROL NOTES

- THE CONTRACTOR SHALL MAINTAIN ONE LANE OF TRAFFIC IN EACH DIRECTION AT ALL TIMES. THE CONTRACTOR SHALL FURNISH ALL SIGNS, BARRICADES, LIGHTS, FLAGMEN AND WATCHMEN AS NECESSARY TO MAINTAIN THE FLOW OF TRAFFIC IN ACCORDANCE WITH ITEM 614 OF THE OHIO DEPARTMENT OF TRANSPORTATION CONSTRUCTION AND MATERIALS SPECIFICATIONS, 2019 EDITION.
- IT SHALL BE THE RESPONSIBILITY OF THE CONTRACTOR TO MAKE ARRANGEMENTS FOR POLICE OFFICERS DIRECTLY WITH THE CITY OF CUYAHOGA FALLS POLICE DEPT. THE CITY INSPECTOR WILL DETERMINE WHEN POLICE OFFICERS ARE NEEDED. PAYMENT FOR LEOs SHALL BE INCLUDED IN ITEM 614, MAINT. OF TRAFFIC.
- ALL WORK PERFORMED WITHIN THE RIGHT-OF-WAY OF A STREET OR HIGHWAY UNDER THE JURISDICTION OF THE CITY OF CUYAHOGA FALLS SHALL BE SUBJECT TO ALL REQUIREMENTS OF PART 7 (CONSTRUCTION AND MAINTENANCE OPERATIONS) OF THE "OHIO MANUAL OF UNIFORM TRAFFIC CONTROL DEVICES" (OMUTCD).
- UNDER NO CIRCUMSTANCES SHALL ANY ROAD BE COMPLETELY CLOSED TO THROUGH TRAFFIC WITHOUT THE APPROVAL AND THE EXPRESSED WRITTEN CONSENT OF THE SERVICE DIRECTOR.



TERMINAL END STORM DRAIN CLEANOUT DETAIL
N.T.S.

STORMWATER NOTES

- VARIOUS FITTINGS, ADAPTORS AND BENDS MAY BE REQUIRED TO TIE EXISTING DOWNSPOUT DRAINS TO COLLECTOR PIPE. COST OF THESE FITTINGS IS TO BE INCLUDED IN COST OF PIPE.
- AT NO TIME IS SEDIMENT ALLOWED INTO EXISTING SEWERS. ADEQUATE EROSION CONTROL MEASURES ARE TO BE USED AT ALL TIMES.
- ALL CONSTRUCTION METHODS AND PRACTICES MUST BE DONE IN ACCORDANCE WITH REQUIREMENTS AS SET FORTH BY O.S.H.A. REGULATIONS (LATEST EDITION).

The patented Dandy Bag® is designed for use with flat grates (including round) and mountable curbs to detain sediment-laden storm water. The suspended solids are allowed to settle out of the slowed flow prior to entering the Dandy Bag®.

Installation

- Stand the grate on end
- Place the Dandy Bag® over the grate
- Roll the grate over so that the open end is up
- Pull up the slack
- Tuck the flap in
- Press the velcro strips together
- Be sure that the end of the grate is completely covered by the flap or the Dandy Bag® will not work properly
- Holding the handles, carefully place the Dandy Bag® with the grate inserted into the catch basin frame

Maintenance

To insure proper operation remove silt, sediment, and debris from the surface and the vicinity of the unit with a square point shovel or stiff bristle broom away from environmentally sensitive areas and waterways in manner satisfactory to the engineer/inspector. Remove fine material from inside Dandy Bag® as needed. Dispose of Dandy Bag® no longer in use at an appropriate recycling or solid waste facility.

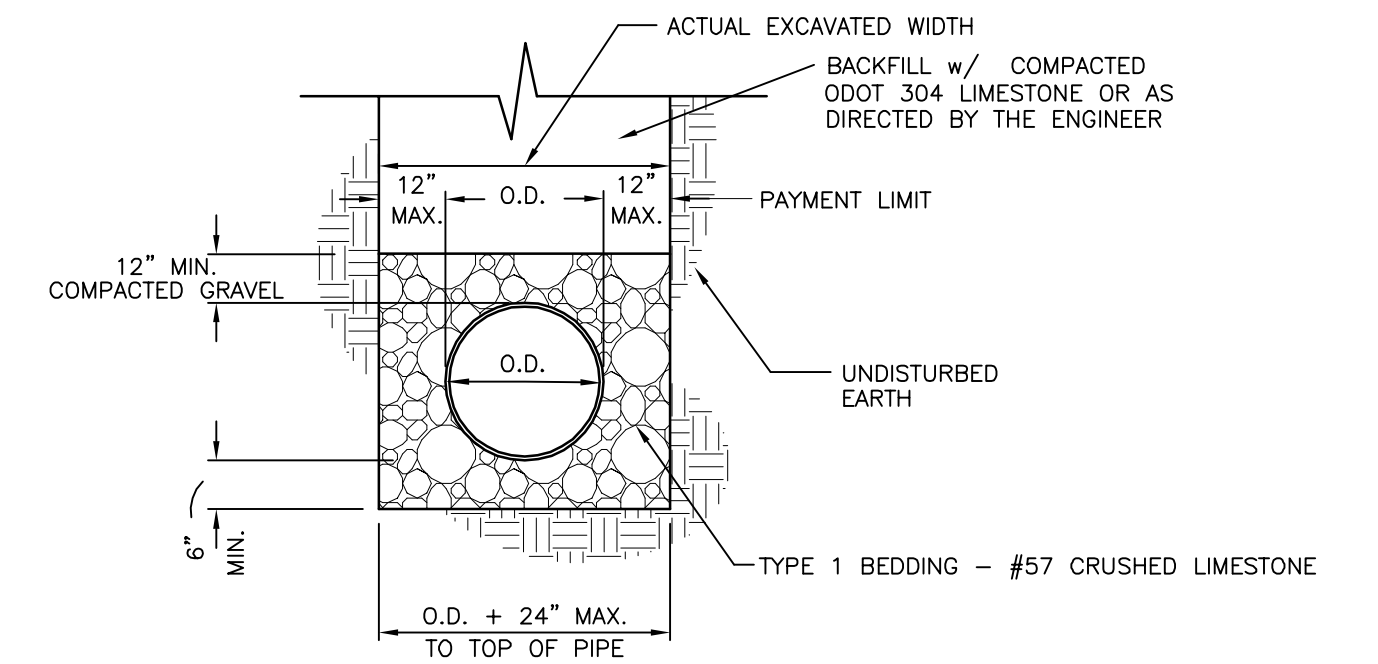
Inlet Inspection

To inspect inlet, remove Dandy Bag® with grate inside, inspect catch basin and replace Dandy Bag back into grate frame.

(IP) = INLET PROTECTION REQUIRED

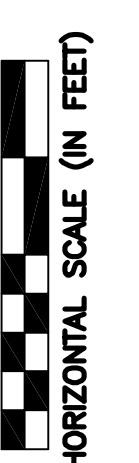
EROSION CONTROL DETAIL

N.T.S.



TYPICAL TRENCH SECTION

NOT TO SCALE



CALCULATED PAH CHECKED TVD

DETAILS AND NOTES PRIOR PARK DRIVE

CITY OF CUYAHOGA FALLS DIVISION OF ENGINEERING

